



ROYAL BOROUGH OF  
**WINDSOR**  
**MAIDENHEAD**  
LONDON'S COUNTRY ESTATE

OFFICIAL VENUES DIRECTORY 2019

[WWW.WINDSOR.GOV.UK](http://WWW.WINDSOR.GOV.UK)



# REDEFINING BUSINESS

Just 15 minutes from Heathrow and 40 minutes from London, The Oakley Court is ideally located for meetings, conferences and events with a range of flexible spaces to cater for up to 500 people.

Hold your conference here and you'll impress, captivate and inspire your delegates. Stunning riverside grounds provide the wow factor while creative food, impeccable service and extensive leisure facilities combine to create an inspirational venue.

The Oakley Court, Windsor Road  
Water Oakley, Windsor, Berkshire SL45UR  
Tel +44 (0)1753 609988  
[www.oakleycourt.co.uk](http://www.oakleycourt.co.uk)



THE OAKLEY COURT  
WINDSOR





Royal Borough  
of Windsor &  
Maidenhead

# *Be inspired...*

...in a place that embodies the history of the nation. Where royal patronage meets a rich cultural heritage and stunning architecture enriches the glorious natural scenery.



Front Cover Photo: St George's Chapel, Windsor © Dean and Canons of Windsor. Photographer: Gill The Photographer.  
Photo above: The Royal Wedding, May 2018, Windsor © Dean and Canons of Windsor. Photographer: Gill The Photographer.

# 3

## *The Right Choice*

You've made it!  
The Royal Borough  
of Windsor & Maidenhead.



# 36

## *Our Suppliers*

For help with everything  
from catering to  
event management  
and guiding services  
to rail transport.



# 6

## *As we Live & Breathe*

We know this destination  
inside and out.  
We're here to help.



# 4

## *Motivate, Reward, Entertain*

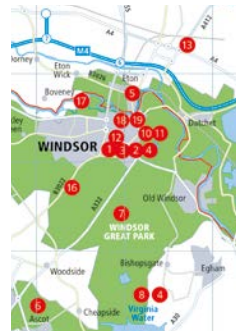
Our guide to the best  
incentives, team building and  
corporate hospitality.

# Contents

# 43

## *Getting here & Getting Around*

By road, by rail, by air.



# 5

## *48hrs in Windsor*

It doesn't matter how  
many times you visited  
before there's always  
something new to see  
or experience.

# 8

## *Our Venues*

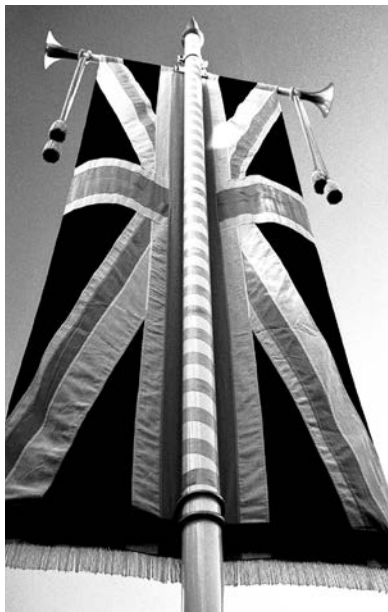
A selection of the best,  
most interesting and  
versatile locations  
for your next meeting  
or event.

# 46

## *Map*

Because you need to  
find your way around.

# *The Right Choice*



## *You've made it! The Royal Borough of Windsor & Maidenhead.*

You can't say the word Windsor without conjuring up images of the world's oldest and largest inhabited castle, the country's longest-reigning monarch, world-class international events and stunning natural scenery.



The region thrives on its royal patronage, rich cultural heritage and an array of British icons. Add to this a wealth of attractions combined with superb shopping and a range of high quality restaurants and you have the complete package when it comes to placing your next meeting or event.



# Motivate, Reward, Entertain

CORPORATE HOSPITALITY, TEAM BUILDING AND INCENTIVE TRAVEL

## Events

From Royal Ascot, the centrepiece of the British social calendar to Windsor Festival, one of the premier music and arts festivals in the UK, events in this destination reflect its very special position as a royal borough.



## Experience

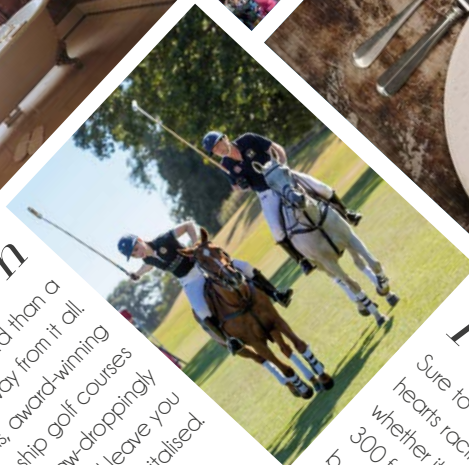
The magic of this iconic location is brought to life on a private evening tour of the magnificent Windsor Castle while guided walking tours, with one of our expert guides, bring 1,000 years of history to life. In the towns and villages surrounding Windsor discover a landscape that inspired artists, authors, adventurers, poets and politicians.



Royal Collection Trust / © Her Majesty Queen Elizabeth 2017  
Photographer: Mark Finnes

## Relaxation

There's no better reward than a luxurious break away from it all. Stunning spa hotels, award-winning restaurants, championship golf courses and acre after acre of jaw-droppingly beautiful countryside will leave you feeling renewed and revitalised.



## Participation

Sure to get the adrenalin pumping and hearts racing, rise to a new challenge whether it be a bungee jump from 300 feet, the spectacular fun of dragon boat racing or the exhilaration of mastering Windsor's Escape Experience.

## Learning

Whether learning to fly at one of the oldest and best-known airfields in the country, enjoying the challenge of polo – the world's oldest, most graceful and exhilarating sport – or taking a culinary masterclass with one of the finest chefs in the country, there's so much to experience.



# 48hrs in Windsor

## DAY ONE

With almost 1,000 years of history to discover, 13 acres (5 hectares) of buildings including the magnificent State Apartments, Queen Mary's Dolls' House and St George's Chapel you need at least two hours at Windsor Castle. It doesn't matter how many times you visited before there's always something new to see or experience. From Conquer the Tower to summer band concerts and visits to the Moat Garden this iconic attraction has to be top of your must-visit list.

Time your visit so that you can catch the changing of the guard ceremony that takes place in Lower Ward. This is the only place outside London where you can see this colourful display whilst listening to the military band.

Relax after lunch on a gentle 40-minute cruise along the River Thames as it meanders past famous sites such as Eton College Chapel and Royal Windsor Racecourse or take in the spectacular views of Windsor Castle from the Long Walk during a horse-drawn carriage ride.

Take a stroll over the bridge to the opposite bank of the Thames into Eton with its world-famous school. Eton is an eclectic mix of traditional and contemporary retail bringing together antiques and modern art, traditional medicines and complementary beauty therapies, English roast dinners and exquisite European cuisine. The mile-long high street leading down to Eton College gives you a sense of stepping back in time when you see the boys in their traditional school dress.

Merely a hop, skip and a jump from London, a stone's throw from Heathrow Airport but a world away from the city, Windsor is a place of beauty where you can enjoy the very best of English culture, feel a sense of history and free your mind.

After hours you'll find great entertainment at Windsor's Theatre Royal or one of two fantastic arts centres in the borough. For the best dining experience head to the culinary mother ship at Bray where Michelin stars abound but if you prefer to stay in Windsor you'll find a fine array of eating places and watering holes.

## DAY TWO

Learn more about this charming town and its history by taking a guided tour with a local expert. Nobody knows it quite like Windsor Tourist Guides do.

For a fun way to experience Windsor & Eton head to the Duck Stop outside the Theatre Royal to catch the Duck tour, an amphibious vehicle that takes you on a circular tour of the town on road and water. If you prefer something more active test your skills at the brand-new, interactive and immersive Escape Rooms in Windsor. Find clues, solve puzzles and crack codes to locate the key for your escape! You have 60 minutes on the clock... will you make it out?

Windsor Great Park is the perfect place to unwind and enjoy the natural environment, offering horse riding, mountain biking, kite flying, picnicking, walks and more. Glorious gardens bursting with colour all year round, space to run free and plenty of fresh air will help clear your mind and refresh your soul.

# As we live & breathe...

*The team here at the Royal Borough of Windsor & Maidenhead have over 60 years of knowledge and experience between them. We live and work here. We love it and we want you to love it too!*

As local experts we're here to help with finding your venue, booking your accommodation, planning your itinerary and sourcing those special ingredients that make your particular meeting or event a truly memorable one.



## SERVICES WE OFFER:

- Venue finding and contracting
- Accommodation booking
- Group and individual bookings for attractions and events
- Inspiration and contacts for team building activities, major events and outdoor pursuits
- Itinerary planning for social, cultural and partner programmes
- Connecting you with our local network of suppliers
- Expert advice on travel to the area
- Delegate literature
- Imagery and promotional content for your own event marketing

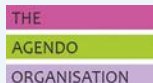
## GET IN TOUCH:

For information, venue finding service or simply for some inspiration and advice.

Call: 01753 743907 or 01753 743900

Email: [Windsor.accommodation@rbwm.gov.uk](mailto:Windsor.accommodation@rbwm.gov.uk)

Visit: [Windsor.gov.uk](http://Windsor.gov.uk)



*We also work in partnership with The Agendo Organisation to offer a full range of event-related services:*

Venue finding using experts whose backgrounds are in event management, hotels, catering, and conference organisers and business travel agencies.

Consultancy services offering a range of skills to clients looking for short- or medium-term solutions to a shortage of resources or for extra help during peaks in demand.

Event theming service providing venue decoration and room dressing services to clients who wish to transform traditional event space into something more spectacular.

## GET IN TOUCH:

Call: 07585 952032



# Featured Venues

Venue	Max Theatre Capacity	Bedrooms	Page	Map Grid Ref
Ascot Racecourse	900	-	8	G6
Bateaux Windsor	-	-	9	H4
The Boatman	-	-	10	I4
Castle Hotel Windsor	400	108	11	H4
Cliveden House	60	47	12	G2
Coworth Park	100	70	13	H7
Cumberland Lodge	120	56	14	I5
De Vere Beaumont Estate	700	429	15	I5
Foxhills	150	70	16	I7
French Brothers Boats	150	-	17	H4
Gilbey's Bar, Restaurant & Townhouse	-	4	18	I4
Harte and Garter Hotel	260	98	19	I4
Heathrow Windsor Marriott Hotel	300	382	20	K4
Hobbs of Henley	80	-	21	C2
The Langley	120	41	22	I3
Macdonald Compleat Angler	120	64	23	E2
Macdonald Windsor Hotel	140	120	24	I4
Monkey Island Estate	100	-	25	G3
The Oakley Court	120	118	27	G4
The Olde Bell	150	48	26	D2
The Old Court	159	-	28	H4
The Royal Adelaide Hotel	110	43	29	H4
The Royal Windsor	30	-	30	I4
Royal Windsor Racecourse	280	-	31	H4
The Runnymede on Thames	350	180	32	J5
Sir Christopher Wren Hotel & Spa	90	139	33	I4
Stoke Park Country Club	80	49	34	I3
The Windsor Guildhall	100	-	35	I4

Suppliers	Page
Ascot Racecourse	Back cover
Escape Experience	41
Goose & Berry	39
Ice Experience	36
Steam Dreams	36
Private Boat Hire	38
The Agendo Organisation & Zest	37
The Old Court	49
VisitThames	39
Windsor Castle	48
Windsor Duck Tours	40
Windsor Festival	49
Windsor Tourist Guides Ltd	38

KEY TO SYMBOLS			
			
Leisure facilities /tennis	Meeting room	Bedrooms	Restaurant
			
Swimming pool indoors	Swimming pool outdoors	24hr Room Service	Watersports
			
Horse Riding	Golf	Garden	Gym facilities
			
			Spa facilities

# Ascot Racecourse



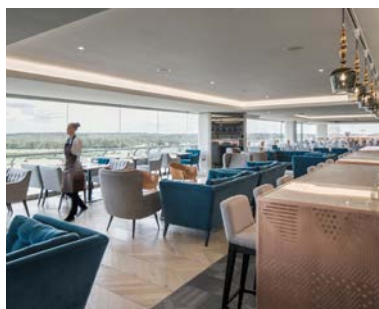
Ascot, Berkshire, SL5 7JX

T: +44(0) 344 346 3611 | E: [conferenceandevents@ascot.co.uk](mailto:conferenceandevents@ascot.co.uk)

Contact: Abigail Elkins: Conference & Events Senior Sales Executive | [Abigail.Elkins@ascot.co.uk](mailto:Abigail.Elkins@ascot.co.uk)  
Elizabeth Wright: Conference & Events Relationship Manager | [elizabeth.wright@ascot.co.uk](mailto:elizabeth.wright@ascot.co.uk)

Ascot is an unrivalled conference and events venue that is truly unique with a rich heritage and history few sporting venues can match. Ascot has established itself as a national institution, with Royal Ascot as the centrepiece of the British social calendar and the ultimate stage for the best racehorses in the world. We offer clients and guests alike first-class facilities and cater for a wide range of events, from an executive meeting for 10, to an exclusive event for 8,000.

With over 300 meeting rooms, 4,000 m2 of exhibition space, private dining suites, stylish restaurants, attractive open spaces, terraces and lawns, Ascot is ideal for hosting events. The venue is easily accessible, located close to major road networks, 30 minutes from Heathrow and under an hour from London by train and has complimentary onsite parking for over 6,000 cars. Our experienced team are fully committed to providing an outstanding and memorable experience.



## Meeting and Conference Facilities

Suite/Capacity	Theatre	Classroom	Dinner	Dinner Dance	Reception	Boardroom
Pavilion 1*	400	200	300	250	400	–
Pavilion 2*	900	400	600	550	1000	–
Pavilion 3*	250	150	220	150	300	–
Parade Ring Suite	280	130	230	200	400	–
Panoramic Suite	100	–	200	120	250	–
On 5 Suite	200	–	200	200	300	–
Windsor Forest Suite	70	50	70	50	100	28
Concourse	–	–	800	–	3000	–
Ascot Authority Suite	120	50	100	60	100	50
Hospitality Suites	From 10-25	–	From 12-30	–	From 15-40	–
Old Paddock Suite	200	120	200	160	350	–
Furlong Club (July-Oct)	900	–	550	500	1000	–

## Venue Details

<b>Bedrooms:</b>	Preferred hotel programme	<b>Airport:</b>	16 miles
<b>Parking:</b>	10,000	<b>Nearest train station:</b>	Ascot

\*(Pavilion areas can be combined)

# Bateaux Windsor



Thames Side, Windsor SL4 1QN

T: +44 (0)1753 202 302 | E: sales@bateauxwindsor.com | W: www.bateauxwindsor.com

Set your event in the picturesque décor of Windsor with the exclusive hire of our Melody vessel. Embark on-board our elegant, beautifully crafted river boat and take your guests on a unique experience where the stunning river views and Windsor's green landscape become the backdrop to your event. Freshly prepared, and seasonal, our exciting menus can be bespoke to a sit-down dinner or a standing reception for a unique dining experience. Bateaux Windsor is a moving restaurant with fine dining and excellent wines at the heart of the experience. Presentation, modern and traditional flavours combine to make Bateaux Windsor the most unique dining experience on the Thames. Each cruise has its own specially designed menu, with all dishes cooked on board the boat in the galley kitchen. Our seasonal menus, changed every three months, are bursting with the freshest, most seasonal ingredients, remaining loyal to local and British produce at all times. Our three hour dinner package offers exclusive hire of one of our vessels throughout the evening - ideal for a gala dinner, award ceremony, wedding reception, product launch and other special occasions. Enjoy an exclusive festive lunch or dinner on-board our Melody vessel and celebrate the joy of the Christmas season cruising down the river. Three extended three hour dinner cruises or two hour lunch cruises include a welcome drink, three course menu, Christmas crackers, half a bottle of wine per guest, tea, coffee and petit fours, festive music and the stunning Windsor landscape at night unfolding around you.



## Meeting and Conference Facilities

Suite/Capacity	Theatre	Classroom	Dinner	Dinner Dance	Reception	Boardroom
The Melody	-	-	40	-	40	-

## Venue Details

<b>Bedrooms:</b>	0	<b>Airport:</b>	8 miles
<b>Parking:</b>	-	<b>Nearest train station:</b>	Windsor & Eton Riverside

# The Boatman



The Boatman, 10 Thames Side, Windsor, Berkshire, SL4 1QN

T: 01753 620010 | E: [boatmanwindsor@slhuk.com](mailto:boatmanwindsor@slhuk.com) | W: [www.boatmanwindsor.com](http://www.boatmanwindsor.com)

The Boatman in Windsor is directly on the River Thames overlooking Eton Bridge, and is arguably the best location in the town for soaking up the incredible waterfront views and watching the world go by. In addition to the large open Terrace, there are three distinct areas providing flexible space for both private and business events and celebrations. Space includes a restaurant with capacity for up to 100 people and a self-contained glass conservatory on the outside terrace (with retractable roof) with up to 80 covers. The main historic building dates from 1829 when it was built to serve the river trade and it has been a pub/restaurant ever since. Free WiFi is available. Located in the heart of Windsor and behind Windsor & Eton Riverside Station, the station car-park is immediately adjacent to the venue with plenty of additional parking close by. There is disabled access and amenities and drop-off/pick-up areas front and rear of the building.



## Meeting and Conference Facilities

Suite/Capacity	Theatre	Classroom	Dinner	Dinner Dance	Reception	Boardroom
Restaurant	–	–	80	60	100	–
Bar (in conjunction with restaurant)	–	–	–	–	60	–
Riverside Conservatory	–	–	80	–	70	40

## Venue Details

<b>Bedrooms:</b>	–	<b>Airport:</b>	11 miles
<b>Parking:</b>	Windsor & Eton Riverside	<b>Nearest train station:</b>	Windsor & Eton Riverside

# Castle Hotel Windsor

## MGallery by Sofitel



18 High Street, Windsor, SL4 1LJ

T: 01753 851 577 | E: h6618-sb@accor.com | W: www.castlehotelwindsor.com

Contact: Emily Dawkins - Sales & Marketing Manager (Emily.Dawkins@accor.com) or Emma Holliday, Sales Office Manager (h6618-SL@accor.com)

In the heart of Royal Windsor, the Castle Hotel Windsor – MGallery by Sofitel is an elegant Georgian building, situated opposite the Guildhall and only 1 minute walk from Windsor Castle. It makes the ideal base for exploring the town. The hotel offers 11 newly refurbished and fully equipped meeting & banqueting rooms catering up to 400 delegates. Full audio-visual support can be provided and a dedicated conference planner to assist with all aspects of the event planning, theming, entertainment, local tours & team building activities. The 108 bedrooms have been beautifully decorated with a refined take on contemporary design. Complimentary amenities, such as luxury toiletries and fluffy bathrobes are provided so that guests can truly relax. Their Marco Pierre White Steakhouse Restaurant Bar & Grill pairs hearty dishes with a wide selection of wines & cocktails. The menu is filled with old British classics, ranging from steak, warming pie dishes & nostalgic desserts.



### Meeting and Conference Facilities

Suite/Capacity	Theatre	U-Shape	Boardroom	Classroom	Banquet	Cabaret
Windsor & Georgian	400	60	50	150	300	160
Windsor Suite	240	60	50	96	192	96
Georgian Suite	80	30	24	30	60	40
Sandringham Suite	80	30	24	30	60	40
Balmoral Suite	80	30	24	30	60	40
Blenheim Suite	-	-	14	-	16	-
Chatsworth	-	-	12	-	-	-
Hollywood	-	-	8	-	-	-
Warwick	-	-	6	-	-	-
Hampton	-	-	4	-	-	-

### Venue Details

<b>Bedrooms:</b>	108	<b>Airport:</b>	10 miles
<b>Parking:</b>	108 cars and 1 Coaches	<b>Nearest train station:</b>	Windsor Central

# Cliveden House



Cliveden House, Berkshire, England, SL6 0JF

T: 01628 668561 | W: [www.clivedenhouse.co.uk/organise-a-meeting](http://www.clivedenhouse.co.uk/organise-a-meeting)

Contact: [special.events@clivedenhouse.co.uk](mailto:special.events@clivedenhouse.co.uk)

Just 40 minutes from London, Cliveden is a sublime escape from the city. Voted 'England's Leading Country House Hotel' in the World Travel Awards 2018, this five-star property sits amongst 376 acres of magnificent Grade 1 listed formal National Trust gardens and woodland. The Cliveden Spa offers a glorious setting in which to relax and unwind, while for those looking to explore, there's the option of a leisurely boat trip along the Thames followed by afternoon tea in the main house. For a special dinner, The Cliveden Dining Room offers a menu of divine dishes, while The Astor Grill is perfect for a relaxed lunch with friends and family. Professionalism, unbeatable service and attention to detail are the hallmarks of Cliveden as a meeting venue. The finest of luxury conference hotels, Cliveden is not only the perfect location for business meetings and conferences but is also ideally located for entertaining key clients, showcasing new products or quite simply thanking the team. There are few places more luxurious or enchanting than Cliveden for a private celebration or meal.



## Meeting and Conference Facilities

Suite/Capacity	Theatre	Classroom	Dinner	Cabaret	Reception	Boardroom
French Dining Room	60	–	60	50	100	30
Boudoir	40	–	24	–	40	14
Waldo's (front)	–	–	–	–	20	–
Waldo's (back)	30	–	30	–	40	16
Screening Room	60	–	50	30	–	20
Cellar Dining Room	–	–	12	–	–	12
Motor House	50	–	–	–	–	26
Churchill	50	–	–	–	–	24

## Venue Details

<b>Bedrooms:</b>	47	<b>Airport:</b>	16
<b>Parking:</b>	Free - onsite	<b>Nearest train station:</b>	Taplow

# Coworth Park



Blacknest Road, Ascot, Berkshire, SL5 7SE

T: 01344 630539 | E: [groupandeventsales.CPA@dorchestercollection.com](mailto:groupandeventsales.CPA@dorchestercollection.com) | W: [www.dorchestercollection.com](http://www.dorchestercollection.com)

Contact: Group and events at Coworth Park

Dorchester Collection's luxury country house hotel and spa, Coworth Park, nestled amidst 240 acres of parkland, combines the intimacy of a private country estate with a modern sophistication. With both stunning accommodation and event space this makes it ideally suited to those seeking a memorable landscape for a business meeting or conference. Situated on the edge of Windsor Great Park, just 45 minutes from central London and 20 minutes from Heathrow airport, it's easy to get to but has a real get-away-from-it-all feel. Four flexible event spaces benefit from natural daylight and are ideally suited for private dining. The castle-like charm of the Tower House, with its balcony overlooking the lake, is suitable for up to 30 guests as is the Oak Room. The Oval Room and Garden Room, with exterior terraces, have a dining capacity for up to 100 guests. All the event rooms have state-of-the-art conference technology, on-site AV support and a dedicated events manager.



## Meeting and Conference Facilities

Suite/Capacity	Theatre	Classroom	Banquet	Dinner Dance	Reception	Boardroom
The Oak Room	30	12	30	-	50	20
The Oval Room	100	60	100	70	100	42
Garden Room	80	60	80	40	100	30
Tower House	30	18	30	-	50	18

## Venue Details

<b>Bedrooms:</b>	70	<b>Airport:</b>	14 miles
<b>Parking:</b>	70 cars	<b>Nearest train station:</b>	Ascot

# Cumberland Lodge



The Great Park, Windsor, Berkshire, SL4 2HP

T: 01784 497780 | E: [enquiries@cumberlandlodge.ac.uk](mailto:enquiries@cumberlandlodge.ac.uk) | W: [www.cumberlandlodge.ac.uk](http://www.cumberlandlodge.ac.uk)

Contact: Matthew Hancock, Sales and Marketing Manager

Cumberland Lodge is an educational foundation and residential conference centre, majestically situated in the heart of Windsor Great Park. Our stunning facilities are available to hire for conferences, meetings, away days, professional development courses and special events such as weddings. These bookings support our charitable work of empowering people, through dialogue and debate, to tackle social divisions and promote progress towards more peaceful, open and inclusive societies. We offer a range of flexible meeting spaces, spread across three historic buildings, including large conference rooms with linked breakout rooms, elegant reception rooms, private meeting spaces and an open-air woodland seminar space. The tranquillity and seclusion of the Great Park, the expansive green space and relaxed atmosphere all help to make Cumberland Lodge a popular place for away days and retreats. There are plenty of quiet areas, inside and out, to reflect and gather your thoughts. Cumberland Lodge is widely noted for its relaxed atmosphere, excellent food, impressive facilities and exceptional quality of service. These qualities and more make Cumberland Lodge a truly distinctive venue, and a memorable setting for all kinds of events.



## Meeting and Conference Facilities

Suite/Capacity	Theatre	Classroom	Dinner	Dinner Dance/Cabaret	Reception	Boardroom
Flitcroft	120	60	-	-	-	48
Sandby	50	24	-	-	-	30
Amy Buller Library	40	20	-	-	-	25
Greening	30	18	-	-	-	24
Hodgson	30	18	-	-	-	22
Halifax	12	-	-	-	-	12
Drawing Room	-	-	-	-	80	-
Sitting Room	-	-	-	-	20	-
Cumberland Room	-	-	64	52	-	-
Prince Christian Room	-	-	36	100 (88 cabaret)	-	-
Princess Helena Room	-	-	18	-	-	-
Wilderness Marquee	30	20	-	-	30	20

## Venue Details

<b>Bedrooms:</b>	56	<b>Airport:</b>	8 miles
<b>Parking:</b>	150	<b>Nearest train station:</b>	Egham



# De Vere Beaumont Estate



Burfield Road, Old Windsor, Berkshire, SL4 2JJ

T: 01753 640 000 | E: [beaumontsales@devere.com](mailto:beaumontsales@devere.com) | W: [www.devere.com/de-vere/beaumont-estate](http://www.devere.com/de-vere/beaumont-estate)

Nestled in Old Windsor, the historic and unique De Vere Beaumont Estate is set in 40 acres of stunning parkland. The hotel is an elaborate mix of old and new, and features over 55 conference, training and event spaces including the stunning Old Chapel, which has recently been fully refurbished and restored to its former glory. The hotel also boasts 429 bedrooms, ranging from standard doubles to executive suites, restaurant, bars, gym, pool and a wide range of outdoor activities.

Located close to the M25, M4 and M3, with Heathrow airport just 15 minutes away by car. The nearest train station is Egham which is a 5 minute drive away. Close to local attractions including Legoland, Windsor Castle and Thorpe Park. Hotel facilities include a full equipped gym, indoor swimming pool, tennis court, football pitch and teambuilding activities.



## Meeting and Conference Facilities

Suite/Capacity	Theatre	Classroom	Dinner	Dinner Dance	Reception	Boardroom
Hanover Suite	700	–	550	450	700	80
Balmoral Suite	180	90	120	120	180	40
Tudor Suite	150	70	–	130	150	40
The Chapel	170	60	200	80	250	50
Kensington Suite	50	32	–	48	50	34
Windsor 2,3,6,7 & 8	80	24	–	30	80	32
The Remenham	50	20	40	25	50	24

## Venue Details

<b>Bedrooms:</b>	429	<b>Airport:</b>	7 miles
<b>Parking:</b>	600 cars and 6 Coaches	<b>Nearest train station:</b>	Egham



# Foxhills

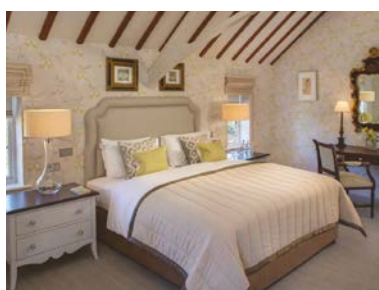


Stonehill Road, Ottershaw, Surrey KT16 0EL

T: 01932 704451 | E: [events@foxhills.co.uk](mailto:events@foxhills.co.uk) | W: [www.foxhills.co.uk/meet](http://www.foxhills.co.uk/meet)

Contact: Meetings and Events Team

Located in the heart of Surrey – just a short drive to the M25 and Heathrow – Foxhills Club & Resort is the ideal setting for your next event. The 400 acre estate has 40 years' experience in hosting events from conferences, training and golf days, to product launches, gala dinners and award ceremonies. Blending friendly service with exceptional facilities, Foxhills features nine unique meetings rooms accommodating up to 180 delegates. Hold your next meeting or private dinner in the 19th-century Manor House, or the modern Clubhouse – the Resort's largest suite – equipped with an outdoor terrace overlooking the joint 18th green of two Championship golf courses. Delegates spending the night in one of 70 bedrooms and suites become a member during their stay. The 24 hour delegate package includes breakfast and dinner in The Manor Restaurant – located in the historic Manor House – and access to the indoor and outdoor pools, outdoor Jacuzzi, gym, par three 9-hole Manor golf course, tennis and squash courts and more. Part of the Foxhills Collection in partnership with Farleigh Golf Club, you will feel better when you leave than when you arrived.



## Meeting and Conference Facilities

Suite/Capacity	Theatre	Classroom	Dinner	Dinner Dance	Reception	Boardroom	Cabaret
Clubhouse	150	60	180	180	240	on request	60
Library	80	36	66	80	80	44	36
Boardroom	–	–	–	–	–	24	–
Bessier	25	–	24	–	–	22	–
Ivatt Briscoe	20	12	–	–	–	14	–
Hutton Room	–	–	–	–	–	10	–
Beech	–	–	–	–	–	4	–
Pine	20	–	16	–	–	14	–
Study	–	–	10	–	–	6	–
Music Room	–	–	64	–	–	–	–
Terrace	–	–	30	–	on request	–	–
Orangery	–	–	42	–	on request	–	–

## Venue Details

<b>Bedrooms:</b>	70	<b>Airport:</b>	16 miles
<b>Parking:</b>		<b>Nearest train station:</b>	Chertsey

# French Brothers Boats



Clewer Boathouse, Clewer Court Road, Windsor, Berkshire, SL4 5JH

T: 01753 851900 | E: sales@frenchbrothers.co.uk | W: www.frenchbrothers.co.uk

Contact: Don Yates

French Brothers operate a large fleet of riverboats on the River Thames at Windsor, Runnymede and Maidenhead. These vessels are capable of carrying 12 to 150 people in comfort with on board bar facilities. Riverboats make an ideal conference venue, providing a relaxed atmosphere to stimulate the business mind. The ever-changing scenery helps to inspire the creative process. Combining business with pleasure is a British tradition and the craft of French Brothers can convert easily from a conference suite to a lively party venue. Clients can tailor make a function or benefit from an inclusive party package which includes Casino, Murder Mystery, and Disco Nights. Heated boats are available all year round, making them an ideal venue for your company's Christmas function. Also available are genuine coal fired steam boats, 'Nuneham' and 'Streatley'. These are suitable for discerning clients, as well as TV and Film Companies requiring a touch of authentic realism to period dramas.



## Meeting and Conference Facilities

Suite/Capacity	Theatre	Classroom	Banquet	Dinner Dance	Reception	Boardroom
New Queen of the Thames	150	150	90	150	150	–
Windsor Monarch	100	100	-	100	100	–
Nuneham	50	50	25	50	70	–
Streatley	50	50	25	50	70	–
Lady Margaret Anne	90	90	60	90	90	–
Windsor Sceptre & Sovereign	90	90	60	90	90	–
Bray Royale	50	50	40	60	60	–
Windsor Royal & Regent	70	70	24	70	70	–
Windsor Majesty	100	100	66	100	100	–

## Venue Details

<b>Bedrooms:</b>	–	<b>Airport:</b>	10 miles
<b>Parking:</b>	Windsor and Runnymede	<b>Nearest train station:</b>	Windsor & Eton Riverside

# Gilbey's Bar, Restaurant & Townhouse



81-83 High Street, Eton, Windsor, Berkshire. SL4 6AF  
 T: +44 (0) 1753 854921 | E: eton@gilbeygroup.com | W: www.gilbeygroup.com

Contact: Emma Brett

Gilbey's Bar, Restaurant & Townhouse is located in the historic and famous Eton High Street, just across the bridge from Windsor Castle. The Gallery, our new and stylish Private Dining Room, seats up to 34 guests on a rectangular table and has its own private courtyard garden with tables and an obelisk gas heater. The Gallery is available to book for business meetings, lunches and dinners as well as standing canapé receptions for up to 50 guests. This room is hugely versatile and is equally suited to private parties and wedding celebrations, as it is for corporate events. It provides the perfect setting for entertaining family, friends and clients. Our second private area: The Upstairs Private Dining Room, with its two windows overlooking Eton High Street, seats up to 16 guests on a rectangular table. This colourful room with its striking watercolours by the well-known artist Alexandra Haynes provides the perfect setting for entertaining family, friends and clients.



## Meeting and Conference Facilities

Suite/Capacity	Theatre	Cabaret	Dinner	Dinner Dance	Reception	Boardroom
The Galley	-	-	34	-	50	34
The Upstairs Private Dining Room	-	-	-	16	-	-

## Venue Details

<b>Bedrooms:</b>	4	<b>Airport:</b>	12 miles
<b>Parking:</b>	Local pay & display	<b>Nearest train station:</b>	Windsor & Eton Riverside

# Harte and Garter Hotel



31 High Street, Windsor, Berkshire, SL4 1PQ

T: 01753 863426 | E: [events.harteandgarter@shlhotels.com](mailto:events.harteandgarter@shlhotels.com) | W: [www.harteandgarterhotel.com](http://www.harteandgarterhotel.com)

Contact: Marie Staddon

One of the most historical Windsor hotels, The Harte and Garter enjoys the finest location in town. Equipped with all the latest modern facilities you'd expect from a professional business venue, the impressive conference and banqueting suites are as well suited to an informal one to one meeting as they are to a large international sales conference. The elegant period Ballroom offers both ambience and flexibility which you need from a modern conference venue. With access via the grand oak staircase, adorned by stained glass windows, you have a location to impress your guests. The Lancaster Suite provides a wonderful setting for when you want to impress your colleagues or clients with that WOW factor! With a balcony offering the stunning backdrop of Windsor Castle. A further 4 meeting rooms are available with capacities ranging from 2 to 40 delegates all boasting wireless internet and air conditioning.



## Meeting and Conference Facilities

Suite/Capacity	Theatre	Cabaret	Dinner	Dinner Dance	Reception	Boardroom
Ballroom	260	80	150	120	260	80
Lancaster	70	40	50	-	80	30
York	-	-	-	-	-	6
Stuart	-	-	-	-	-	8
Martingale	50	20	-	-	-	20
Cavesson	-	-	-	-	-	10
Tearooms	50	-	60	-	80	-
VIP	-	-	20	-	-	23
Garter Bar	-	-	-	-	120	-

## Venue Details

<b>Bedrooms:</b>	98	<b>Airport:</b>	11 miles
<b>Parking:</b>	-	<b>Nearest train station:</b>	Windsor & Eton Central

# Heathrow Windsor Marriott Hotel

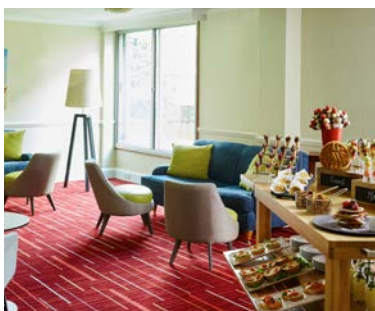


Heathrow Windsor Marriott Hotel, Ditton Road, Langley, Berkshire, SL3 8PT

T: 01753 598181 | E: [mhrs.lhrs.l.conferenceandevents@marriotthotels.com](mailto:mhrs.lhrs.l.conferenceandevents@marriotthotels.com) | W: [www.HeathrowWindsorMarriott.co.uk](http://www.HeathrowWindsorMarriott.co.uk)

Contact: Events Team

Situated just five miles from Heathrow Airport; only 20 minutes from Royal Windsor and close to M4 & M25 motorways. The historic streets of Windsor, filled with unique shops & restaurants, are nearby as are Eton College, LEGOLAND, Racecourses at Ascot & Windsor. Our hotel's three on-site restaurants provide tantalizing dining options and guests also enjoy access to a refreshing indoor pool and expansive Leisure Club. The Buckingham Suite is a large facility that can accommodate up to 320 people for dinner. This highly flexible space is situated on the ground floor and can be divided into three sections. For added flexibility, it has its own breakout area and bar. Outside access makes stage sets – even vehicle delivery – an easy option. The Castle Suite is actually five self-contained rooms in one ground floor location. The Suite has natural daylight with black-out facility, air conditioning, a breakout area and cloakroom, together with the very latest audio-visual technology, making this the perfect environment for training.



## Meeting and Conference Facilities

Suite/Capacity	Theatre	Classroom	Dinner	Dinner Dance	Reception	Boardroom
Buckingham 1	100	50	100	–	120	42
Buckingham 2	100	50	100	–	120	42
Buckingham 3	100	50	100	–	120	42
Buckingham	300	150	320	300	320	–
Warwick Room	25	–	18	–	18	16
Windsor Room	–	–	18	–	18	16
Braemar Suite	65	40	40	–	40	14
Braemar 1 or 2	30	15	30	–	30	14
Kenilworth Room	70	35	70	–	80	36
Carenarfon Room	50	30	30	–	30	28
Stormont Room	30	18	20	–	20	14
Boardroom 1 to 9	10	–	10	–	–	10

## Venue Details

<b>Bedrooms:</b>	382	<b>Airport:</b>	5 miles
<b>Parking:</b>	Chargeable	<b>Nearest train station:</b>	Slough

# Hobbs of Henley



The Boathouse, Station Road, Henley-on-Thames, Oxon, RG9 1AZ  
 T: 01491 572035 | E: charter@hobbsofhenley.co.uk | W: www.hobbsofhenley.com  
 Contact: Michelle Patrick – Passenger Boat Coordinator

Hobbs of Henley Ltd was established in 1870 and remains to this day a family run business. Our working knowledge of the Thames goes back five generations and has the enviable reputation of providing the finest hospitality afloat for over 148 years. Centrally situated in the scenic town of Henley-on-Thames, we are perfectly situated for your special event. Our luxurious vessels are ideal for any corporate event and are also easily adaptable into boardroom or theatre style arrangements, making a unique and private venue for meetings and conferences. A fully licensed bar is also available on all vessels. Our experienced event management team and caterers will work to transform your ideas into an unforgettable occasion. We also have a large selection of luxury, motor launches for private charter for smaller parties of up to 12 people, ideal for a corporate day out at Henley Royal Regatta or Henley Music Festival.



## Meeting and Conference Facilities

Suite/Capacity	Theatre	Classroom	Dinner	Dinner Dance	Reception	Boardroom
The New Orleans	80	80	80	72	125	80
The Waterman	60	60	72	68	100	72
The Hibernia	40	40	50	40	60	50

## Venue Details

<b>Bedrooms:</b>	–	<b>Airport:</b>	24 miles
<b>Parking:</b>	20 by prior arrangement	<b>Nearest train station:</b>	Henley

# The Langley



The Langley Buckinghamshire, A Luxury Collection Hotel, Uxbridge Road, Iver SL3 6DU

T: +44 20 7236 3636 | E: info@thelangley.com | W: www.thelangley.com

Contact: Alexandra Bew – Director of Sales & Marketing

The former country estate of the third Duke of Marlborough, The Langley is a luxury hotel and spa set in the heart of the Buckinghamshire countryside. As sister hotel to The Wellesley Knightsbridge, London's finest boutique-grand hotel, it offers the same level of luxury and exclusivity but with its own unique character and setting. The hotel's boutique selection of 41 exquisite rooms and suites are designed by Dennis Irvine Studio with the height of sophistication and refinement in mind. The rooms are divided across the main house and The Brew House, a Grade II listed 18th Century outbuilding. A collection of exclusive dining experiences are also available for the guests at The Langley, including a signature restaurant and an intimate bar specialising in the finest cognac and cigars.

Our meeting rooms and private dining spaces make the right impression for client entertaining and corporate events. Floor-to-ceiling windows in the historical Winter Garden offer a luxurious and elegant backdrop for weddings and celebrations. Exclusive hotel hire is also available by special request.



## Meeting and Conference Facilities

Suite/Capacity	Theatre	Classroom	Dinner	Dinner Dance /Cabaret	Reception	Boardroom
Winter Garden	120	30	100	45	-	30
The Blenheim	-	-	-	-	-	6
The Windsor	-	-	-	-	-	10
The Lake Room	-	-	-	-	-	10
Cinema	6	-	-	-	-	-
The Iver	-	-	-	-	-	10
The Boot Room	-	-	12	-	30	-
Teaching Kitchen	-	10	-	-	-	-
Presidential Lounge	-	-	24	-	-	20
Cedar	100	-	40	-	-	-
Drawing Room	-	-	-	-	100	-

## Venue Details

<b>Bedrooms:</b>	41	<b>Airport:</b>	8 miles (Heathrow Airport)
<b>Parking:</b>	Ample parking on site	<b>Nearest train station:</b>	Langley (Berks)



# Macdonald Compleat Angler



Marlow Bridge, Marlow, Buckinghamshire SL7 1RG

T: 0844 879 9128 | E: [compleatangler@macdonald-hotels.co.uk](mailto:compleatangler@macdonald-hotels.co.uk) | W: [www.MacdonaldHotels.co.uk/CompleatAngler](http://www.MacdonaldHotels.co.uk/CompleatAngler)

Contact: Special Events Team

The renowned Macdonald Compleat Angler is a classic 400 year old English country house located in an idyllic location on the banks of the River Thames. The high quality award winning cuisine sets it apart from many, with organic and farm sourced foods, menus and service standards enjoyed by royals and celebrities alike. The venue regularly hosts gala dinners, hospitality events, boardroom retreats, team building and champagne cruises.

Stylish, luxurious and romantic - the award-winning Macdonald Compleat Angler offers you the perfect accommodation for a magical stay by the riverside. Our luxurious four star en-suite accommodation, next to the cascading waters of Marlow Weir, is the perfect place to stay. The blend of history and contemporary quality is truly reflected in the fresh look experienced by many regular discerning guests.



## Meeting and Conference Facilities

Suite/Capacity	Theatre	Classroom	Dinner	Dinner Dance	Reception	Boardroom
Balmoral Suite	–	–	–	–	–	18
Regency Room	120	56	120	80	200	42
River Room	40	20	48	–	60	26
Sandringham Suite	–	–	–	–	–	16
Thames Room	30	16	36	–	40	20

## Venue Details

<b>Bedrooms:</b>	64	<b>Airport:</b>	25 miles
<b>Parking:</b>	100 cars	<b>Nearest train station:</b>	Marlow



# Macdonald Windsor Hotel



23 High Street, Windsor, Berkshire, SL4 1LH

T: 0344 879 9101 | E: [conference.windsor@macdonald-hotels.co.uk](mailto:conference.windsor@macdonald-hotels.co.uk) | W: [www.MacdonaldHotels.co.uk/Windsor](http://www.MacdonaldHotels.co.uk/Windsor)

Located only 20 minutes from Heathrow Airport and less than an hour from London this boutique townhouse hotel offers everything you need for meetings, conferences and events together with the attentive service you and your guests or delegates deserve. With a perfect blend of historical charm and cutting-edge facilities, the stylish meeting rooms at Macdonald Windsor Hotel provide the perfect venue for your next meeting or conference and the regal Windsor town centre location provides an enchanting background for corporate events. The hotel features 120 luxurious bedrooms, many with stunning views of Windsor castle, and offer the perfect haven to relax. Guests can enjoy a cocktail in Caley's lounge and a delicious meal at Caley's Brasserie which serves excellent modern British cuisine. WiFi is free and unlimited throughout the hotel for all guests and extra bandwidth is available for meetings and conferences.



## Meeting and Conference Facilities

Suite/Capacity	Theatre	Classroom	Dinner	Dinner Dance	Reception	Boardroom
Castle Suite	140	65	120	100	–	–
Castle 1	70	35	60	–	–	28
Castle 2	60	25	40	–	–	24
St Georges	70	40	40	–	–	25
Highgrove	–	–	–	–	–	24
Kensington	–	–	–	–	–	24
Victoria	–	–	–	–	–	12
Albert	–	–	–	–	–	12



## Venue Details

<b>Bedrooms:</b>	120	<b>Airport:</b>	10 miles
<b>Parking:</b>	36	<b>Nearest train station:</b>	Windsor & Eton Central

# Monkey Island Estate



Bray-on-Thames, Bray, Maidenhead, SL6 2EE

T: 01628 623 400 | E: [events@monkeyislandestate.co.uk](mailto:events@monkeyislandestate.co.uk)

Situated on a picturesque private island on the River Thames in the historic village of Bray, Monkey Island Estate will open in February 2019 after major renovation by YTL Hotels and the award-winning Champalimaud Design. 41 beautifully-appointed guest rooms and suites reflect a contemporary, English country house feel. Each room is equipped with luxurious amenities, including complimentary Wi-Fi. Moored on the banks of the fish-tail shaped Monkey Island, a unique floating spa will offer a range of exclusive spa treatments. Dining at Monkey Island Estate will always delight. The cuisine is a delectable modern take on British classics, with produce freshly sourced from the gardens and surrounding countryside. The Monkey Island Brasserie is the perfect setting for a long lunch or an exquisite dinner. The Monkey Bar serves delicious light bites from the all-day bar menu, quintessentially English Afternoon Tea and a selection of bespoke cocktails, fine Champagnes and wines from the cellar. Marvel at the monkey inspired, 17th Century frescos which adorn the ceilings of the Grade I listed Monkey Room, whilst a secret staircase leads to an intimate Whisky Snug which provides a perfect finale to a grand evening. Set across seven acres, Monkey Island Estate will provide a memorable location to host the perfect wedding, corporate event or special occasion. Featuring tranquil landscaped gardens, the stately and spacious Ballroom, the graceful River Room and the more intimate Spencer Suite & Boardroom, this remarkable venue will create unforgettable and precious memories of your special event. Accessed only by footbridge, boat or helicopter and surrounded by elegant gardens, Monkey Island Estate is reminiscent of a secluded paradise, yet is only 10 minutes from Windsor, less than an hour's drive from Central London and only 25 minutes by car from Heathrow Airport.



## Meeting and Conference Facilities

Suite/Capacity	Theatre	Classroom	Dinner	Cabaret	Reception	Boardroom
The Ball Room	100	80	130	84	200	-
The Spencer Suite	-	-	-	-	-	12
The Boardroom	-	-	-	-	-	20
The River Room	80	60	100	60	150	-

## Venue Details

<b>Bedrooms:</b>	<b>Airport:</b>	17 miles
<b>Parking:</b>	<b>Nearest train station:</b>	Maidenhead

# The Oakley Court



Windsor Road, Windsor, Berkshire, SL4 5UR

T: +44 (0)1753 609988 | E: [Conference@oakleycourt.co.uk](mailto:Conference@oakleycourt.co.uk) | W: [www.oakleycourt.co.uk](http://www.oakleycourt.co.uk)

Contact: The Conference Team - [conference@oakleycourt.co.uk](mailto:conference@oakleycourt.co.uk)

We love business and pleasure – whoever said you couldn't combine the two in beautiful, tranquil surroundings, it certainly wasn't us. At The Oakley Court, location is everything. Situated 40 minutes from the centre of London, 20 minutes from Heathrow Airport, and surrounded by beautiful scenery and extraordinary heritage, you'll discover that a secluded hideaway with all the easy transport links really exists. You'll also find that we're not just your average country house hotel. Our unique style showcases a character that is both quirky and elegant, and delivered with plenty of luxury and indulgence. Served with good food and excellent service, by our dedicated conference butler and his team of experienced staff, in one of our exclusive hire rooms, we will help you to create the right environment for your next board meeting, team away day, strategy retreat, or client event. Whatever you need, however unusual – we'll make sure you get it.



## Meeting and Conference Facilities

Suite/Capacity	Cabaret	Theatre	Classroom	Dinner	Dinner Dance	Reception	Boardroom	UShape
Windsor Suite	120	200	90	160	140	270	60	72
Gloucester	56	120	58	80	60	130	38	50
Westminster	64	130	65	90	70	140	44	50
Richmond	20	26	18	–	–	–	18	–
Marlow	–	–	–	–	–	–	12	–
Kingston	15	15	–	–	–	–	14	14
Eton	15	22	14	–	–	–	16	16
Henley	–	–	–	–	–	–	8	–
The Boathouse	–	40	22	–	–	40	22	–
The Conservatory	–	30	20	30	–	40	18	–
The Oakleaf Lounge	27	40	20	30	–	40	20	–
Sitting Room	–	30	18	26	–	30	20	–
Library	–	–	–	12	–	20	10	–

## Venue Details

<b>Bedrooms:</b>	118	<b>Airport:</b>	14 miles
<b>Parking:</b>	200 cars	<b>Nearest train station:</b>	Windsor & Eton Riverside/Central

# The Olde Bell



The Olde Bell, High Street, Hurley nr Maidenhead, Berkshire, SL6 5LX  
 T: 01628 825881 | E: [events@coachinginn.co.uk](mailto:events@coachinginn.co.uk) | W: [www.theoldebell.co.uk](http://www.theoldebell.co.uk)

Coaching Inns have always made great meeting points. The Olde Bell has a well-deserved reputation for its warming welcome and convivial atmosphere, meaning it's the best venue for your meeting or event. Located in the royal county of Berkshire and under an hour from London, The Olde Bell offers beautiful surroundings, coupled with some of the most original and flexible events spaces in Berkshire. So why choose The Olde Bell? We offer a unique meeting experience encouraging your employees to think differently away from the standard corporate environment. 6 uniquely styled meeting rooms brimming with character and tradition with exclusive use available. Award winning food and historic bar area. Complimentary WiFi throughout the hotel. 48 individually styled bedrooms sat across five buildings, some with roll top baths and others with beautiful views over our gorgeous gardens. Our gardens and exclusive use Malt House grounds are ideal for outdoor activities and away days.



## Meeting and Conference Facilities

Suite/Capacity	Theatre	Classroom	Dinner	Dinner Dance	Reception	Boardroom
Tithe Barn	150	-	130	72	180	52
Garden Room in the Malt House	20	-	14	-	25	14
Music Room in the Malt House	20	-	20	-	30	16
Drawing Room in the Malt House	70	-	60	30	80	30
Library Room in the Malt House	20	-	10	-	25	10
Oak Room in the Malt House	50	-	33	24	40	24

## Venue Details

<b>Bedrooms:</b>	48	<b>Airport:</b>	20 miles
<b>Parking:</b>	Free - onsite	<b>Nearest train station:</b>	Maidenhead

# The Old Court



St Leonard's Road, Windsor SL4 3BL

T: 01753 911333 | E: [martin@oldcourt.org](mailto:martin@oldcourt.org) | W: [www.oldcourt.org](http://www.oldcourt.org)

Contact: Martin Denny, Director

The Old Court, Windsor's community arts centre, in the town centre, offers a full programme of live events and cinema screenings, and is also available for corporate and private hire. Our fully-equipped theatre Auditorium, the Basement studio, the Bar, and the Attic gallery are all flexible spaces which offer a range of options. This Edwardian building which housed the Court, the Fire Station and the Police Station before becoming Windsor Community Arts Centre in the late 1970s, was extensively refurbished in 2018. The venue now has digital sound and lighting systems in the Auditorium and Basement, and our cinema has a digital projector and Dolby surround sound. All our spaces have new conference technology, on-site technical support, and a dedicated event manager. Our Bar, managed by Windsor & Eton Brewery, provides a comfortable and convivial space for informal meetings and gatherings.



## Meeting and Conference Facilities

Suite/Capacity	Theatre	Classroom	Dinner	Dinner Dance	Reception	Boardroom
Auditorium	159	80	-	-	150	40
Basement	80	80	-	-	130	30
Bar	-	-	-	-	100	-
Attic	24	30	-	-	45	14

## Venue Details

Bedrooms:	-	Airport:	7 miles
Parking:	-	Nearest train station:	Windsor & Eton Central

# The Royal Adelaide Hotel

## Windsor



The Royal Adelaide Hotel, 44-46 Kings Road, Windsor SL4 2AG

T: 01753 863916 | E: [events@royaladelaide.com](mailto:events@royaladelaide.com) | W: [www.royaladelaide.com](http://www.royaladelaide.com)

Contact: General Manager - Lorraine Miller

The Royal Adelaide Hotel offers you bright, airy conference rooms with natural light and all that Windsor can offer on our doorstep. Located opposite the Long Walk to Windsor Castle, we have 43 air conditioned bedrooms if you want to continue into the evening with a glass of wine and dinner to toast the day's success. The Kings Suite is an intimate room for up to 20 boardroom style. The Windsor Suite is a spacious room accommodating up to 80 people. This room has been designed with flexible partitions that allow you to arrange them to suit your specific requirements. Whether it's bacon sandwiches on arrival or cream tea at break time, we can design your conference your way. Easy access to Heathrow makes The Royal Adelaide perfect for international meetings. Free wifi and chargeable onsite parking.



### Meeting and Conference Facilities

Suite/Capacity	Theatre	Classroom	Dinner	Dinner Dance	Reception	Boardroom
Kings	30	20	-	-	20	20
Buckingham*	100	80	80	80	100	50
Windsor	75	30	75	75	75	40
Sandringham	30	20	-	-	20	20
Eton	20	12	-	-	-	10

### Venue Details

<b>Bedrooms:</b>	43	<b>Airport:</b>	9 miles
<b>Parking:</b>	Prebooked only. Chargeable.	<b>Nearest train station:</b>	Windsor & Eton Central

\* Please note that the Buckingham suite is Windsor. Sandringham and Eton combined.

# The Royal Windsor



Datchet Road, Windsor, SL4 1QD

T: 01753 865 179 | E: [info@theroyalwindsor.co.uk](mailto:info@theroyalwindsor.co.uk) | W: [www.theroyalwindsor.co.uk](http://www.theroyalwindsor.co.uk)

Steeped in history and boasting the finest Castle views in Windsor, The Royal Windsor is the perfect venue for your event. Blending tradition with style, The Royal Windsor is the oldest licenced premises in the Royal town, giving an historic edge and interest to your event. A large garden to the rear of the venue offers incredible views of Windsor Castle, making it the perfect backdrop for celebration photographs. The garden holds up to 200, and boasts a private bar and barbecue area. The Restaurant and the Private Bar can both be booked exclusively for functions. Full venue hire is available for parties of up to 400. Bespoke packages are created by a personal planner, with top of the range technology, HD screens and sound systems all on site. Anything from ice sculptures to live bands can be provided as extras. Licenced for weddings, The Royal Windsor is also ideal for corporate events and family celebrations as well as commemorations and wakes. Located directly opposite Windsor & Eton Riverside Station, with its direct line into London Waterloo, and just a minute's walk from three large out-of-town car parks, The Royal Windsor is easily accessed from central Windsor as well as the M25 and M4 motorways. Heathrow Airport is just 15 minutes by car. There is Disabled parking directly opposite the venue. Food is cooked fresh on the premises using only the finest ingredients, and all bar staff are trained mixologists. Choose The Royal Windsor for a truly regal celebration.



## Meeting and Conference Facilities

Suite/Capacity	Theatre	Classroom	Dinner	Dinner Dance/Cabaret	Reception	Boardroom
Restaurant	30	40	50	90	90	-
Sports Bar with HD Projector	20	20	35	70	70	-
Garden	-	-	90	200	200	-

## Venue Details

<b>Bedrooms:</b>	-	<b>Airport:</b>	10 miles
<b>Parking:</b>	Nearby	<b>Nearest train station:</b>	Windsor & Eton Riverside



# Royal Windsor Racecourse



Maidenhead Road, Windsor, Berkshire, SL4 5JJ

T: 01753 498 400 | E: [events@windsor-racecourse.co.uk](mailto:events@windsor-racecourse.co.uk) | W: [www.windsor-racecourse.co.uk](http://www.windsor-racecourse.co.uk)

Set in 165 acres of beautiful countryside on the banks of the River Thames, within sight of Windsor Castle, Royal Windsor Racecourse offers a versatile venue for business or pleasure perfect for your meeting, conference or event. With 1000m<sup>2</sup> of indoor space and 165 acres of outdoor space events of all sizes can be accommodated. Your guests enter an island of unspoilt countryside along a sweeping tree lined approach. A short gallop from London, it is just one mile from Windsor Town Centre and twelve miles from Heathrow in the heart of the Thames Valley. All meeting rooms have panoramic views of the racecourse, the River Thames and beyond. As a popular venue for charity fun runs, exhibitions and trade shows, the experienced team will ensure the site works for you and your event.



## Meeting and Conference Facilities

Suite/Capacity	Cabaret	Theatre	Classroom	Dinner	Dinner Dance	Reception	Boardroom
Castle Restaurant	72	144	-	100	70	144	-
Grandstand 1	24	40	20	30	-	40	20
Grandstand 2	24	40	20	30	-	40	20
Castle Suite (whole floor)	128	280	-	180	140	280	-
2 x Grandstand Suites	48	60	42	60	-	-	26
Grandstand Boxes 3 to 8	24-40	20-53	18	10-40	-	20-60	20-26
Royal Suite (whole floor)	120	276	90	200	160	300	-
Paddock Suite 1 to 8		24-50	-	12-52	-	30-80	14-20
Riverbank Marquee		-	-	270	250	350	-
Club		70	-	90	80	120	-

## Venue Details

<b>Bedrooms:</b>	-	<b>Airport:</b>	12 miles
<b>Parking:</b>	4,000	<b>Nearest train station:</b>	Windsor & Eton Riverside/Central

# The Runnymede on Thames



Windsor Road, Egham, Surrey, TW20 0AG

T: 01784 220 981 | E: [sales@therunnymede.co.uk](mailto:sales@therunnymede.co.uk) | W: [www.runnymedehotel.com](http://www.runnymedehotel.com)

Contact: Chris Norris, Meetings and Events Sales Manager

With a fabulous location on the banks of the River Thames, close to Royal Windsor and near to the M25 and Heathrow, The Runnymede on Thames is easy to reach by river, road, rail, or air! The hotel boasts open spaces, fresh contemporary interiors, two riverside restaurants, 180 guest rooms, an award-winning spa, a buzzy atmosphere and friendly service. With 13 meeting rooms and 10 syndicate rooms; two to 150 delegates can exercise their minds and bodies. There's natural daylight in every room, fully controllable air-conditioning, flexible space, the latest meeting room technology at your fingertips, networking spaces, fantastic formal or informal dining options from banquets to BBQ's, and it's all supported by our hugely experienced meetings and events team. The atmosphere everywhere is very relaxed with plenty of places to chat and chill. We've created it this way because we understand that when delegates relax they work more effectively too.



## Meeting and Conference Facilities

Suite/Capacity	Theatre	Classroom	Dinner	Dinner Dance	Reception	Boardroom
Grand Union Suite	350	250	300	250	350	76
Grand Union 1	150	80	120	100	150	50
Grand Union 1 & 2	250	150	180	–	250	60
Riverside Suite	120	72	110	80	120	50
Riverside 1 & 2	70	32	50	40	70	34
Riverside 3	40	20	40	–	70	20
Mallard 1 & 2	50	24	36	–	50	24
Minnow/Willow	–	–	–	–	–	11
Mayfly 1	–	–	–	–	–	16
The Basement	20	–	16	–	30	–

## Venue Details

<b>Bedrooms:</b>	180	<b>Airport:</b>	11 miles
<b>Parking:</b>	300 cars	<b>Nearest train station:</b>	Egham

# Sir Christopher Wren Hotel & Spa



Thames Street, Windsor, Berkshire SL4 1PX

T: 01753 202807 | E: [wrens@sarova.com](mailto:wrens@sarova.com) | W: [www.sirchristopherwren.co.uk](http://www.sirchristopherwren.co.uk)

Contact: Karl Wilson, General Manager and David Somner, Sales Manager.

The historical Sir Christopher Wren Hotel & Spa sits directly on the River Thames in the centre of Royal Windsor. Featuring luxurious rooms and apartments across several characterful buildings, as well as The Brasserie at Sir Christopher Wren and beautiful riverside terrace. It is the perfect location for meetings, corporate events and celebrations. The 4 star venue features unique character, picturesque location and architecture combined with state-of-the-art facilities. The dedicated business and conference centre offers a range of modern, air-conditioned meeting rooms for up to 65 guests. The Princess Suite in Thames House is ideal for larger conferences, receptions and parties for up to 110 guests, and offers direct access to the riverside terrace. The Sienna Room also in Thames House is perfect for more intimate events with up to 18 guests. Across the road is Windsor Lounge, a brand new meeting and event space featuring high-tech facilities, a private entrance and outdoor courtyard. High speed WiFi is free and available throughout the hotel for guests and delegates. All meeting spaces feature large windows, black out blinds and adjustable lighting. The dedicated events team at Sir Christopher Wren Hotel can help you to add a fun twist to your event with a team-building session or games night. You could arrange dragon boating on the Thames, raft building, laser clay pigeon shooting or a trip to the races at Windsor or Ascot.



## Meeting and Conference Facilities

Suite/Capacity	Theatre	Classroom	Dinner	Dinner Dance	Reception	Boardroom
Princess Suite	90	50	100	90	110	45
Sienna Room	18	-	12	-	-	-
Highgrove	-	-	-	-	-	8
Buckingham 1	20	-	-	-	-	12
Buckingham 2	30	8	-	-	-	12
Buckingham Suite	65	24	-	-	-	26
Sandringham	-	-	-	-	-	7
Balmoral 1	20	8	-	-	-	12
Balmoral 2	-	-	-	-	-	8
Balmoral Suite	35	16	-	-	-	24
Windsor Lounge	60	25	-	-	60	25

## Venue Details

<b>Bedrooms:</b>	139	<b>Airport:</b>	10 miles
<b>Parking:</b>	50 cars	<b>Nearest train station:</b>	Windsor & Eton Riverside

# Stoke Park Country Club

## Spa and Hotel



Park Road, Stoke Poges, Buckinghamshire, SL2 4PG

T: 01753 71 71 71 | E: [info@stokepark.com](mailto:info@stokepark.com) | W: [www.stokepark.com](http://www.stokepark.com)

For those seeking an incredible venue in which to entertain, then Stoke Park's nine beautiful function rooms are perfect for private and corporate use, all with glorious views across 300 acres of sweeping parkland estate. Each room not only provides a professional, five star atmosphere for board meetings, training seminars and conferences, but has the added benefit of giving these events a breath-taking backdrop. Whether a family gathering, a special party with close friends, a Wedding, a private lunch, a romantic candlelit dinner for two or just some recent good news, if something is worth celebrating then it's worth celebrating in style. Stoke Park hosts a number of corporate events including: golf days, tennis and spa days, day and 24-hour conferences, awards and gala dinners, incentive and team bonding days and Christmas parties. Stoke Park has a team of experienced event co-ordinators always on hand to ensure that your event is a great success and the organisation of it is stress free.



### Meeting and Conference Facilities

Suite/Capacity	Theatre	Classroom	Dinner	Cabaret	Reception	Boardroom
The Repton	30	–	27	15	30	14
The Chalfont	–	–	18	–	20	12
The Park Salon	70	–	60	40	100	24
The Polo Lounge	12	–	27	–	20	14
The Fountain Room	70	–	146	40	160	30
The Wyatt	25	–	27	–	25	14
The Ballroom	80	–	72	48	80	34
The Buckingham	–	–	12	–	20	11

### Venue Details

<b>Bedrooms:</b>	49	<b>Airport:</b>	9 miles
<b>Parking:</b>	400 cars	<b>Nearest train station:</b>	Slough

# The Windsor Guildhall



High Street, Windsor, SL4 1LR

T: 01628 796284 | M: 07875 121529 | E: [guildhall@rbwm.gov.uk](mailto:guildhall@rbwm.gov.uk)

W: [www.windsor.gov.uk/windsor-guildhall](http://www.windsor.gov.uk/windsor-guildhall)

Contact: Gillian Richards, Meeting and Events Executive

An elegant 17th-century masterpiece designed by Sir Thomas Fitch, Windsor Guildhall adds a special touch of grandeur to dinners, receptions and meetings. The impressive Chamber with its fine collection of portraits of royals spanning the years between Queen Elizabeth I and HM Queen Elizabeth II is the largest room, while the intimate Ascot Room is ideal for meetings and receptions. Guests will dine like royalty on a delicious feast designed by one of our official caterers with drinks chosen by The Vintner to complement the meal. The external Corn Exchange overlooking the High Street is a beautiful location for champagne and canapés, and your evening can be enhanced with exclusive access to the Windsor & Royal Borough Museum. As a unique setting for meetings, both rooms have natural daylight and WiFi, and are available Monday to Friday for full-and half-day hire.



## Meeting and Conference Facilities

Suite/Capacity	Theatre	Classroom	Dinner	Dinner Dance	Reception	Boardroom
The Chamber	100	44	80	-	100	44
Ascot Room	56	16	16	-	30	20

## Venue Details

Bedrooms:	-	Airport:	10 miles
Parking:	-	Nearest train station:	Windsor & Eton Central





Let our  
experience  
make your  
experience.



Conferences.  
Roadshows.  
Presentations.  
Team building.  
PR and product  
launches.  
Venue finding.

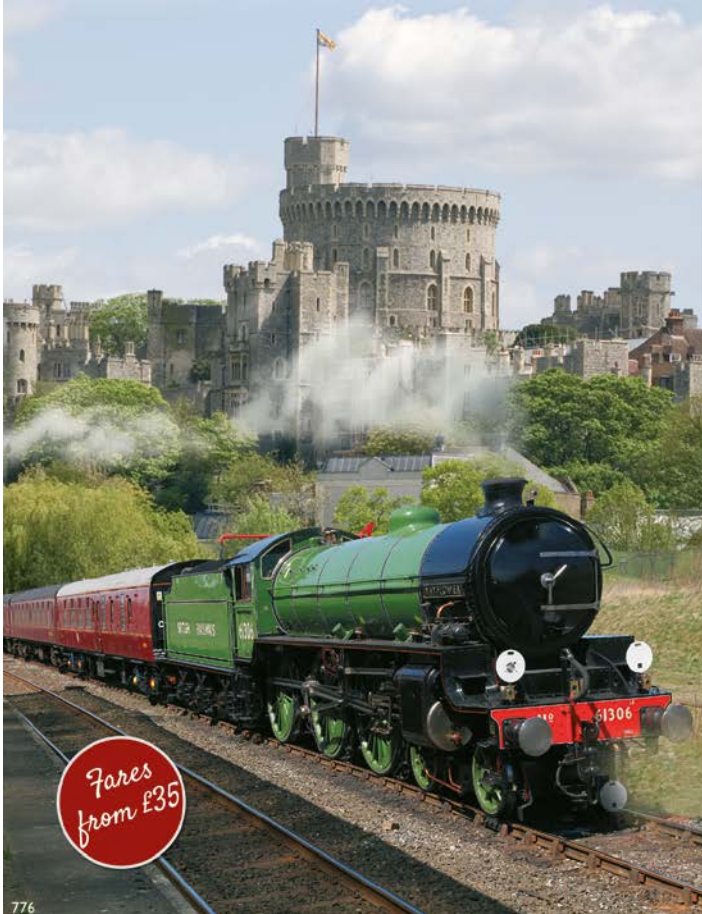


Ice is an award winning Brand Experience Agency. We take care of everything from finding the venue, designing the theme and environment, looking after your audience and taking care of all things technical. **Contact us, we would love to hear from you.**



Ice N°8 High Street Windsor Berkshire SL4 1LD • 01753 31 49 49 • [ice-experience.co.uk](http://ice-experience.co.uk)

The Brand Experience Agency



• THE •  
**ROYAL WINDSOR**  
— STEAM EXPRESS —

**TRAVEL FROM LONDON TO WINDSOR  
BY STEAM TRAIN**

Be transported on this most unique and luxurious of journeys to one of the UK's best loved destinations.

Choose from Pullman Style Dining, private compartments of six or non-dining carriages.

*Perfect for*

AWAY DAYS • TRAINING DAYS •  
CORPORATE HOSPITALITY • SUMMER EVENTS

**RUNNING EVERY TUESDAY  
JUNE - SEPTEMBER FROM LONDON WATERLOO**

**CALL**

01483 209888

**VISIT**

[RoyalWindsorExpress.co.uk](http://RoyalWindsorExpress.co.uk)

**AGENDO IS AN ESTABLISHED AGENCY, PROVIDING A RANGE OF COMPLEMENTARY EVENT-RELATED SERVICES TO OUR CLIENTS.**

THE  
AGENDO  
ORGANISATION

Our core service offering is Venue Finding, using our combined experience of more than 80 years, with experts whose backgrounds are in event management, venue finding, hotels, catering, and conference organisers and business travel agencies.

We know what you go through when you need to find a venue... you scratch your brains, come up with a few suitable places, you google the venue for contact details, you eventually get through to someone and they're fully booked! Or you're on 3rd option! And then you realise you forgot to check whether the meeting room has natural daylight and how much was parking again. It's a frustrating task and it's taking up too much of your time, when you could be getting other things done. Well, we've got the solution for you: call us and we'll take the donkey work off your plate. What's more, it's a free service.

We are a team that work with the fun factor and at the same time offer an excellent job on getting great rates for our clients. Some of our clients have trusted us to book their meetings for 10 years, some even longer! It's all about trust and reputation: you'll realise the difference we can make after the first booking.

*Come join the Fun Team!*

**The Agendo Organisation and Zest ME...**

*The perfect partnership for your next Corporate Event*

Working throughout the UK with some of the UK's best known household names, Zest ME is the only activity and corporate entertainment agency you need in your little black book of contacts!

Whether you are looking to motivate, celebrate, educate or reward your attendees, Zest ME is sure to create a memorable and highly engaging event experience for all your delegates.

**WE CAN ASSIST WITH:**

- Team building (indoor and outdoor)
- Conference Energisers and Icebreakers
- Themed Events
- Interactive Evening Entertainment
- Awards and Recognition Events
- Audio Visual and Production Assistance



FOR YOUR EXPERT VENUE FINDING & TEAM BUILDING  
CONTACT: ABI ROSS – DIRECTOR – AGENDO  
07585952032 – [abi@agendo.co.uk](mailto:abi@agendo.co.uk)



## PROFESSIONAL BLUE BADGE GUIDES IN WINDSOR

- Town walks for clubs and associations
- Corporate and conference town walks
- Personalised tours for friends and family
- Tours of Windsor Castle
- Ghost walks

Web: [www.windsortouristguides.co.uk](http://www.windsortouristguides.co.uk)

Tel: +44(0) 1753 850580

Mob: +44(0) 7799 891578



# Private Boat Hire



If you would like a superb cruise on the River Thames then this could be just the site you are looking for! Whether for a special occasion, business or simply pleasure then look no further, a trip on one of our luxury boats is for you. We run a fleet of five luxury river cruisers based in various locations on the Thames including Windsor, Maidenhead, Bray and Marlow.

**NOW AVAILABLE** We are now able to offer a private mooring for visitors to Bray Village, The Fat Duck, Hinds Head, The Crown and Bray Cottages. We also operate boat trips directly to The Waterside Inn for those with a reservation.

To discuss your requirements call Steve Harris on 07977 448 117 or email: [fringilla@hotmail.co.uk](mailto:fringilla@hotmail.co.uk)  
[www.privateboathire.co.uk](http://www.privateboathire.co.uk)



# MEET ALONG THE RIVER

## The Royal River Thames

**Heritage Hotels, International Sporting Locations,  
Boats on the Thames and even an island or two...**



Meetings | Conferences | Award Ceremonies | Team Building | Fundraising events | Incentive programmes



Locations along the River Thames including London, Windsor, Marlow, Reading, Henley & Oxford  
[www.visitthames.co.uk/venues/conferences](http://www.visitthames.co.uk/venues/conferences)



## goose & berry

CATERING FOR FOODIES

Goose & Berry combine seasonal local produce with fabulous taste, a wealth of experience and impeccable execution to create a luxury experience. Perfect for your event, however large or small.

With catering options including canapés and cocktails, fine dining, food stalls, dessert rooms and roving oyster bars, Goose & Berry are brimming with creative solutions to impress your guests or clients.

We love bringing our unique style to venues and private residences in London & the home counties.



WE'RE LOVELY, GET IN TOUCH!  
CALL 01628 298080  
MAIL [hello@gooseandberry.co.uk](mailto:hello@gooseandberry.co.uk)

Find out more about Goose & Berry online at [www.gooseandberry.co.uk](http://www.gooseandberry.co.uk)

# Two experiences, one price.

The  
perfect  
2 for 1  
offer.

A unique tour of Windsor,  
by both road and river.

Enjoy fantastic views of Windsor Castle by river;  
explore the Long walk and the Crown Estate by road.

And in the middle, splashdown, as you travel from land into water.

You haven't seen Windsor until you've seen it on a Duck Tour.

Whether it's a tour with friends, family or workmates,  
book your Duck Tour by phone or email.

**10% off**

Use discount  
code:

**SPLASH19**  
(online bookings only)

[www.windsorducktours.co.uk](http://www.windsorducktours.co.uk)

01753 581158





## CROWN JEWEL HEIST

## AREA 51

# UNLOCK

WINDSOR'S NEWEST EXPERIENCE

You're stuck in a room with no key and you have 60 minutes to escape. Don't panic, find clues, solve puzzles and crack codes.

Immersive, interactive and exciting, find your way through the medieval castle, secure the treasure and make your escape in the Crown Jewel Heist.

Or unearth the secrets of Area 51 and learn the truth about aliens on Earth.

Whether it's a family experience you'll never forget, or a team building exercise everyone will enjoy, book your Windsor Escape Experience for any of our rooms by phone, email or online.

☎ 01753 866 266 ✉ [hello@escapewindsor.co.uk](mailto:hello@escapewindsor.co.uk)

📍 15A Goswell Hill Windsor, Berkshire, SL4 1RH

[www.escapewindsor.co.uk](http://www.escapewindsor.co.uk)

# ARRIVE READY FOR BUSINESS



With more seats, free Wi-Fi and power at every seat, travel time needn't be wasted time.

Book your business trip with your **local TMC** or at **GWR.com**

**GWR**

Great  
Western  
Railway

# Getting Here & Getting Around

The Royal Borough of Windsor & Maidenhead is just 30 miles west of London with Heathrow Airport even closer, just 15 minutes away. Luton and Gatwick Airports are within an hour's drive. The whole of the Royal Borough is easily accessible via the major motorway networks of the M3, M4, M25 and M40 and is well served by public transport.

## *Arriving by Air*

### WINDSOR

The Royal Borough is just 12 miles from London Heathrow Airport and easily accessible from London's other airports making it a perfect location for an international meeting or event. On arrival in Windsor, why not visit the Royal Windsor Information Centre? Our friendly and knowledgeable staff are waiting to help visitors with enquiries about Windsor and the Royal Borough and can help with finding accommodation, tickets for attractions, etc. Please note due to security reasons there are no left luggage facilities available in Windsor town centre.

### HEATHROW AIRPORT [www.heathrowairport.com](http://www.heathrowairport.com)

- Bus routes 8, 9 and 10 operate up to every 30 minutes, providing direct services between Windsor town centre and Heathrow Terminal 5. Journey time is up to 1 hour. Connections from Slough to Heathrow Terminal 5 are more frequent with buses every 15 minutes during the day and every half hour overnight.
- All services use modern, air conditioned buses with space for luggage. They operate seven days a week from early until late.
- There are free shuttle bus transfers between all terminals at Heathrow Airport.
- To plan your bus journey, visit [www.travelinesoutheast.org.uk](http://www.travelinesoutheast.org.uk).



### GATWICK AIRPORT [www.gatwickairport.com](http://www.gatwickairport.com)

- From Gatwick Airport take the train to Clapham Junction and then take the train to Windsor and Eton Riverside. Journey time is typically 1 hr 23 mins.
- To plan your rail journey and purchase tickets, visit [www.nationalrail.co.uk](http://www.nationalrail.co.uk).



## Arriving by Train

### WINDSOR

- Windsor is served by two train stations, Windsor and Eton Central and Windsor and Eton Riverside. Both are situated within a few minutes' walk of Windsor Castle and the town's other attractions.
- Great Western Railway operates services between London Paddington, Reading and Oxford, as well as destinations across South Wales and the West of England. Change trains at Slough to catch the branch line service to Windsor and Eton Central. The journey from London takes between 24 - 48 minutes depending on stopping patterns and connections.
- South Western Railway operates direct services from London Waterloo to Windsor and Eton Riverside station. The journey time from London is typically 57-58 minutes. Visitors travelling to LEGOLAND can buy an integrated ticket, which includes rail travel, shuttle bus connection and discounted entry to the attraction.

### MAIDENHEAD

- Maidenhead is served by trains travelling between London Paddington, Reading and Oxford, which are operated by First Great Western. The journey time from London takes between 20 - 50 minutes depending on stopping patterns.
- Maidenhead town centre is a short walk from the station, while the River Thames is just over a mile away.
- Change trains at Maidenhead for branch line services to Cookham, Bourne End and Marlow.

### ASCOT

- Ascot Station lies on the junction between the London Waterloo to Reading line and the branch line to Guildford, which are operated by South Western Railway. The journey time from London Waterloo is just over 50 minutes. Ascot Racecourse is within walking distance of the station.
- Ascot trains call at Sunningdale, which is a short walk from Sunningdale Golf Course.

---

### RAIL INFORMATION

For timetables, journey planner, fares and live information for all rail services, visit [www.nationalrail.co.uk](http://www.nationalrail.co.uk)

---

## Arriving by Bus & Coach

### EXPRESS COACH SERVICES

- The Green Line 702 service provides an hourly coach service from London Victoria Coach Station to Windsor and LEGOLAND, with stops at Hyde Park Corner, Royal Albert Hall, Kensington High Street and Hammersmith.
- Green Line also operates the 703 service from Heathrow Terminal 5 to Windsor, LEGOLAND and Bracknell.
- For timetables and route maps, visit [www.travelinesoutheast.org.uk](http://www.travelinesoutheast.org.uk).

## Arriving by Car

M4 Exit Junction 6 for Windsor or junction 8/9 for Maidenhead

M3 Exit junction 3 (Bagshot)

M25 Exit junction 13 (Egham)

M40 Exit junction 4 (Marlow) or junction 2 (Beaconsfield)

## Wheelchair & Disabled Access

### HACKNEY CARRIAGES

A number of taxis have been adapted to meet the needs of disabled people and wheelchair users. Please call the following telephone numbers to book their services:

- Windsor (01753 862020)
- Ascot (01344 874237)
- Maidenhead (01628 634311)



## Parking

### WINDSOR

Visitors are advised to use one of the long-stay car parks in Windsor, including:

- Romney Lock and King Edward VII Car Parks on Datchet Road
- Alma Road and Alexandra Gardens, next to the Coach Park

These car parks are all less than 10 minutes' walk to Windsor Castle and the town centre and are much cheaper than the short-stay car parks in the middle of town.

Variable message signs on roads around the town show live information on which car parks have spaces.

For details of Windsor car park locations and charges, visit [www.rbwm.gov.uk](http://www.rbwm.gov.uk).

### MAIDENHEAD

The car parks in Maidenhead are all very central to shops and restaurants in the town.

You'll also find parking at Maidenhead riverside close to Boulters Lock.

Variable message signs on roads around the town provide live information on which car parks have spaces.

For details of Maidenhead car park locations and charges, visit [www.rbwm.gov.uk](http://www.rbwm.gov.uk).

### PARK "N" RIDE

Park and ride operates from Home Park, Datchet Road, Windsor. A free shuttle bus runs from the car park to Windsor Guildhall every 15-20 minutes between 7am and 9pm, from Monday to Friday. The car park is not available at weekends due to events at Home Park.

## Parking for Disabled Visitors

### ON-STREET PARKING

Blue Badge holders can park in shared use bays (resident and pay and display), on-street pay and display areas and limited waiting areas for the maximum time as displayed on the signage present. There is a maximum stay of three hours in any on-street disabled parking bay. Blue Badge holders are not permitted to park in resident only bays, taxi bays, bus stops, loading bays/zones and clearways.

### OFF-STREET CAR PARKS

Blue Badge holders can park free of charge in any borough car park when displaying a valid Blue Badge. Please adhere to the maximum stated time for each car park as outlined on the tariff board and ensure your vehicle is parked within the bay markings.

# SOME KEY PLACES OF INTEREST:

- 1
- 2
- 3
- 4
- 5
- 6
- 7

1. ASCOT RACECOURSE
2. BOULTER'S LOCK
3. CLIVEDEN, NATIONAL TRUST GARDENS
4. ETON COLLEGE
5. THE ETON WALKWAY
6. FRENCH BROTHERS BOATS
7. HORSE-DRAWN CARRIAGES
8. INFORMATION CENTRE
9. LEGOLAND® WINDSOR
10. MAIDENHEAD HERITAGE CENTRE
11. THE ORIGINAL TOUR
12. PRIVATE BOAT HIRE LTD
13. THE QUEEN'S WALKWAY
14. THE SAVILL GARDEN
15. STANLEY SPENCER GALLERY
16. WINDSOR CASTLE AND FROGMORE HOUSE
17. WINDSOR DUCK TOURS
18. WINDSOR ESCAPE EXPERIENCE
19. WINDSOR & ETON BREWERY
20. WINDSOR GREAT PARK
21. WINDSOR RACECOURSE
22. WINDSOR & ROYAL BOROUGH MUSEUM
23. WINDSOR SHOPPING





# THE ROYAL BOROUGH OF WINDSOR & MAIDENHEAD





WINDSOR CASTLE



# Private Evening Tours

Private Guided Tours offer groups the opportunity to experience the splendour of Windsor Castle's State Apartments when they are usually closed to the public.

Groups, accompanied by an expert guide, will learn about the Castle's rich history and enjoy a private view of some of the most impressive items in the Royal Collection, including Henry VIII's armour and paintings by Van Dyck, Rembrandt and Rubens. Your tour finishes with a glass of champagne and includes a souvenir guidebook.



E-mail enquiries:  
[specialistsales@rct.uk](mailto:specialistsales@rct.uk)

[www.rct.uk](http://www.rct.uk)     
0303 123 7322



WINDSOR FESTIVAL

CELEBRATES ITS

# 50TH ANNIVERSARY

IN 2019

Each year we invite the world's finest musicians, writers, artists, and local performers to entertain and delight festival audiences, to celebrate Windsor's special place as a Royal town, and to inspire the next generation of artistic talent and creativity.

[WWW.WINDSORFESTIVAL.COM](http://WWW.WINDSORFESTIVAL.COM)

01753 832896 | [info@windsorfestival.com](mailto:info@windsorfestival.com)



# Film Music [ARTSPACE] DANCE Theatre Comedy

The Old Court, Windsor's community arts centre, offers a full programme of live events and digital cinema screenings, and is also available for corporate and private hire. Our fully-equipped theatre Auditorium, Basement studio, Bar, and Attic gallery offer a range of options.

01753 911333    [info@oldcourt.org](mailto:info@oldcourt.org)  
St Leonard's Road, Windsor, SL4 3BL  
[www.oldcourt.org](http://www.oldcourt.org)

HOME TO

**THE SCREEN**

WINDSOR'S BOUTIQUE CINEMA

[www.thescreencinema.com](http://www.thescreencinema.com)



## TIME AND SPACE TO RELAX AND REFLECT

---

Whether a private dinner, corporate event, networking reception, conference, exhibition or Christmas party, choose Ascot for a true sense of occasion matched with exemplary service.

Over 300 meeting rooms \* Superb restaurants & private dining suites \* 179 acres of parkland  
4,000m<sup>2</sup> of exhibition space \* Free WiFi \* Air-conditioning \* Complimentary parking

To discuss your requirements or view facilities,  
call **0344 346 3611** or email [conferenceandevents@ascot.co.uk](mailto:conferenceandevents@ascot.co.uk)

